

Sustained Durability



Integrated silicone keypad and laser processing cover



Top-access I/O ports enable visual alignment and insertion



Adjustable height



Storage space



Elevated probe connectors with excellent transducer cable management



Ease-of-transportation

Consona N5 Diagnostic Ultrasound System

Clear Vision, Shared Health



Consona N5 provides healthcare providers with a smart, user-friendly, and reliable ultrasound solution, aiming to make quality imaging and effective diagnosis easily accessible.

Reliable Image Performance

Excellent Image Platform

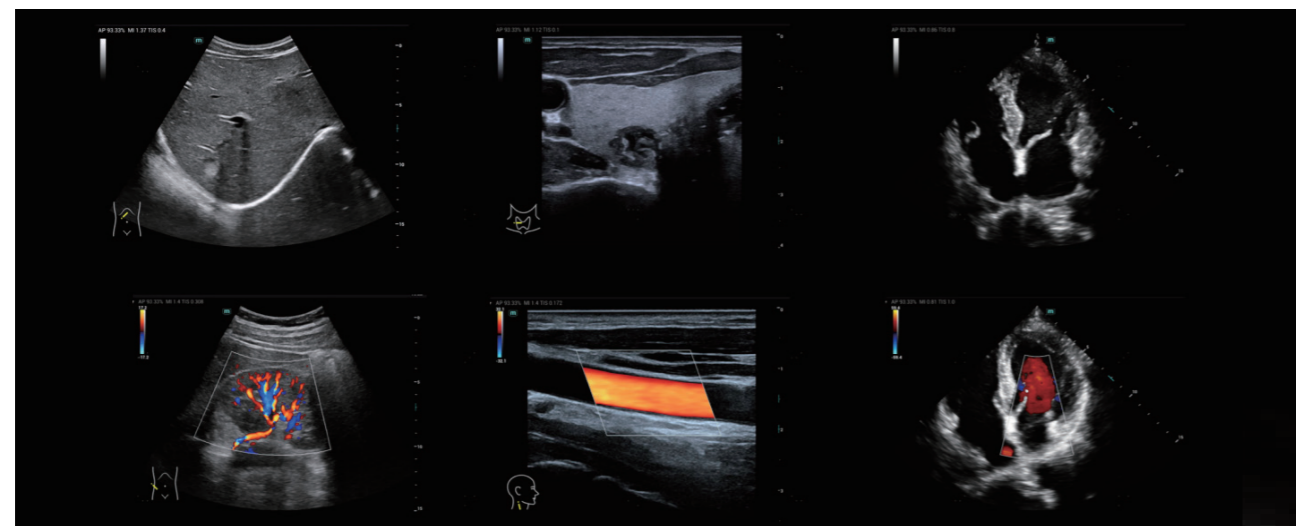
The ZST+ platform is an extraordinary innovation, representing an ultrasound evolution. Transforming ultrasound metrics from conventional beam-forming to channel data based processing. It delivers exceptional image quality for infinite imaging solutions with non-stop improvements.



Outstanding Technologies



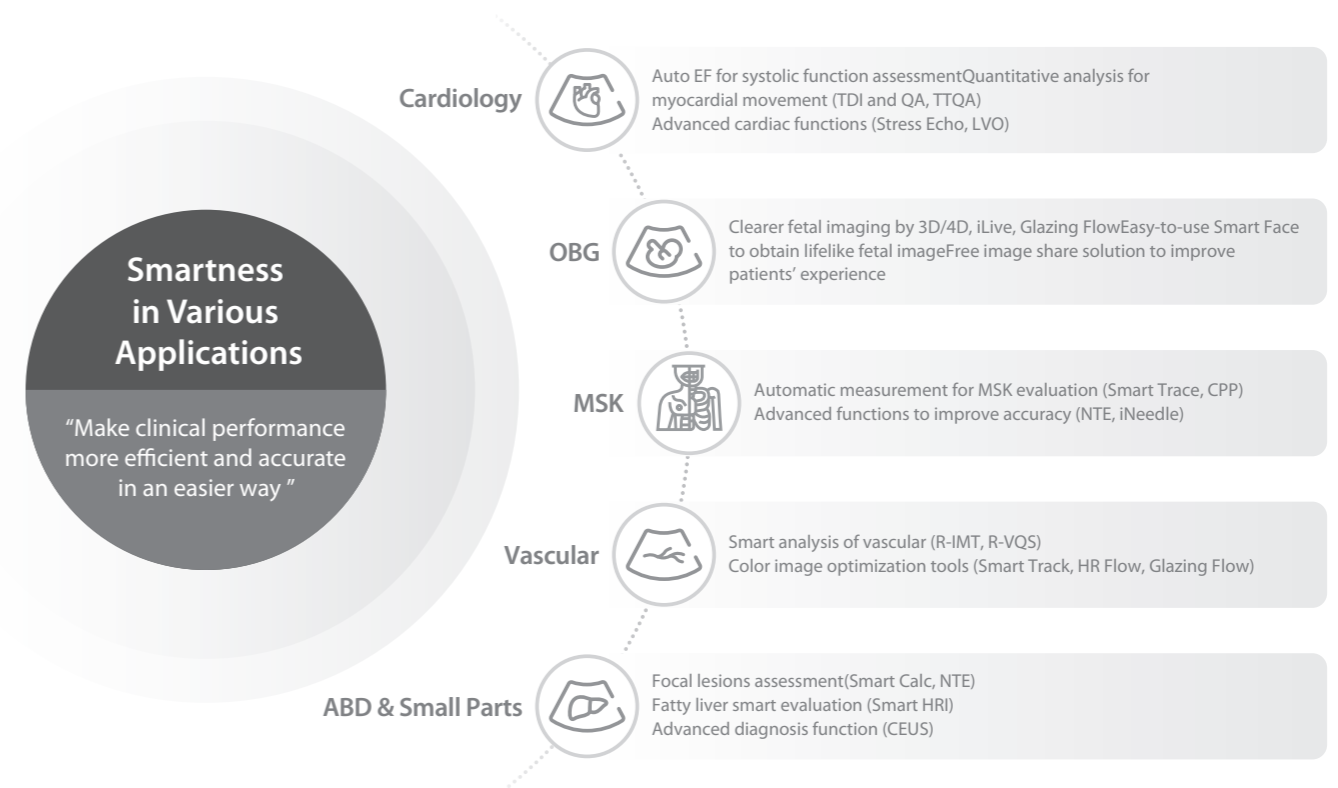
Wide applications



Comprehensive Smartness

Smartness in Various Applications

Consona N5 offers dedicated intelligent solutions for various clinical applications. With its smart and advanced functions, it reduces doctors' operational complexity while improving diagnostic efficiency and accuracy, making high-quality care smart and confidently accessible.



Smartness in Connection

In addition to intelligent clinical application solutions, Consona N5 provides smart connect solutions. It supports doctors in enhancing their professional skills and expanding their imaging services, empowering them to improve their imaging capabilities effectively.



Comprehensive image share solutions

MiCo+ App for more learning resources

Remote collaboration and training on MiCo++